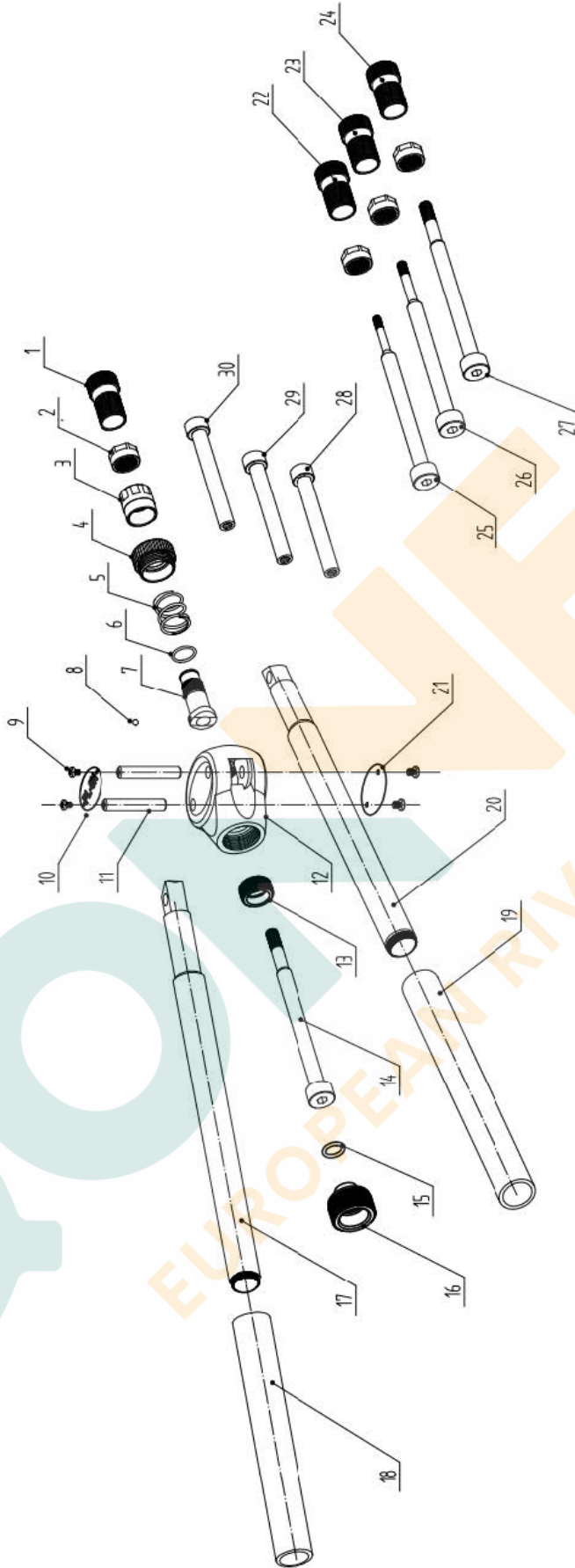




| POS. ID | ITEM CODE | DESCRIPTION | Qty |
|---------|-----------|-----------------------------|-----|
| 1 | 04P00438 | Anvil M6 | 1 |
| 2 | 04P00435 | Counter nut | 4 |
| 3 | 04L20121 | Stroke adjust nut | 1 |
| 4 | 04L20122 | Push pedestal | 1 |
| 5 | 04L20875 | Push | 1 |
| 6 | 04F60037 | O-ring | 1 |
| 7 | 04Z20901 | Main push assembly | 1 |
| 8 | 04F00102 | Steel Ball | 1 |
| 9 | 04L21636 | Screw | 4 |
| 10 | 04L20508 | Type sign | 1 |
| 11 | 04L20511 | Bolt | 2 |
| 12 | 04L20510 | Body | 1 |
| 13 | 04L20803 | Spindle pedestal | 1 |
| 14 | 04L20184 | Mandrel M6 | 1 |
| 15 | 04F60166 | O-ring | 1 |
| 16 | 04Z20902 | Lever assembly(red cover) | 1 |
| 17 | 04L20512 | Red grip | 1 |
| 18 | 04L20513 | Black grip | 1 |
| 19 | 04Z20903 | Lever assembly(black cover) | 1 |
| 20 | 04L20507 | Logo plate | 1 |
| 21 | 04P00434 | Anvil M3 | 1 |
| 22 | 04P00436 | Anvil M4 | 1 |
| 23 | 04P00437 | Anvil M5 | 1 |
| 24 | 04L20181 | Mandrel M3 | 1 |
| 25 | 04L20182 | Mandrel M4 | 1 |
| 26 | 04L20183 | Mandrel M5 | 1 |
| 27 | 04L20721 | Rivetbolt puller M6 | 1 |
| 28 | 04L20722 | Rivetbolt puller M5 | 1 |
| 29 | 04L20723 | Rivetbolt puller M4 | 1 |
| 30 | 04Z20111 | Knob assembly | 1 |





| POS. ID | ITEM CODE | DESCRIPTION | Qty |
|---------|-----------|---------------------|-----|
| 1 | 04L20874 | Stroke adjust nut | 1 |
| 2 | 04F60018 | O-ring | 1 |
| 3 | 04L20122 | Push pedestal | 1 |
| 4 | 04L20875 | Push | 1 |
| 5 | 04Z20119 | Set of Main pushers | 1 |
| 6 | 04L20878 | Body | 1 |
| 7 | 04L20702 | Bolt | 2 |
| 8 | 04Z20009 | Levers | 2 |
| 9 | 04L20133 | Grips | 2 |
| 10 | 04Z40120 | Knob assembly | 1 |
| 11 | 04L21367 | Hex-nut M8 | 1 |
| 12 | 04L20884 | Rod gasket | 1 |
| 13 | 04L20709 | Scale | 1 |
| 14 | 04L20885 | Connecting cover | 1 |
| 15 | 04L20886 | Connecting pin | 1 |
| 16 | 04L20752 | Logo Plate | 1 |
| 16.1 | 04L20851 | Sign op type (logo) | 1 |
| 17 | 04F60166 | O-ring 13.2x2.65 | 1 |
| 18 | 04L20803 | Knob screw cover | 1 |
| 19 | 04L20887 | Puller | 1 |
| 20 | 04F00102 | Steel ball dia. 4.0 | 1 |
| 21 | 04L21366 | Spring | 1 |
| 22 | 04Z20115 | Anvil M6 | 1 |
| 22.1 | 04Z20114 | Anvil M5 | 1 |
| 22.2 | 04Z20113 | Anvil M4 | 1 |
| 22.3 | 04Z20112 | Anvil M3 | 1 |
| 23 | 04L20892 | Drawing Mandrel M6 | 1 |
| 23.1 | 04L20891 | Drawing Mandrel M5 | 1 |
| 23.2 | 04L20890 | Drawing Mandrel M4 | 1 |
| 23.3 | 04L20889 | Drawing Mandrel M3 | 1 |
| 24.1 | 04L20872 | Rivbolt puller M6 | 1 |
| 24.2 | 04L20871 | Rivbolt puller M5 | 1 |
| 24.3 | 04L20870 | Rivbolt puller M4 | 1 |

